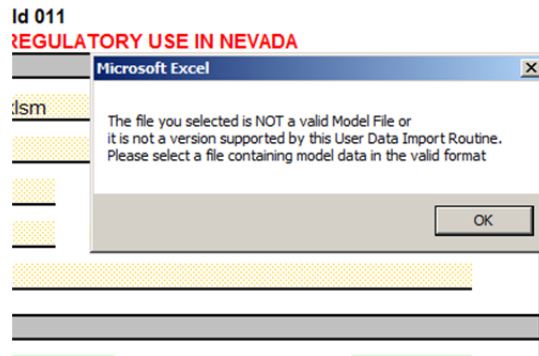


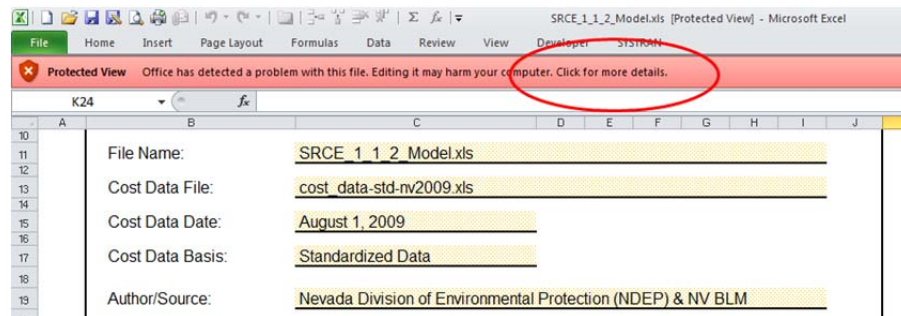
SRCE TIP: IMPORTING EXCEL 2003 SRCE MODELS INTO EXCEL 2010 MODEL VERSIONS

Excel 2003 SRCE models may not initially import easily later versions of the SRCE if you are working in Excel 2010. This is due to the way that macro security is handled in Office 2010. The good news is that there is a way to fix this. Although there are many similarities between Excel 2007 and 2010, this problem does not seem to occur when working in Excel 2007.

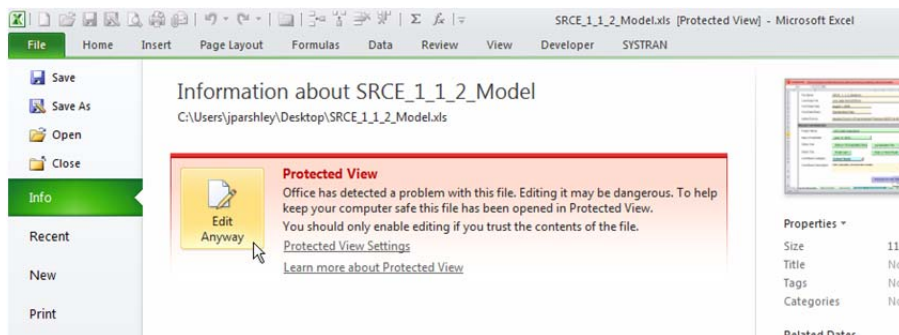
If the message box below appears when you attempt to import data from an Excel 2003 model when using Excel 2010, you will not be able to import that model without a few additional steps.



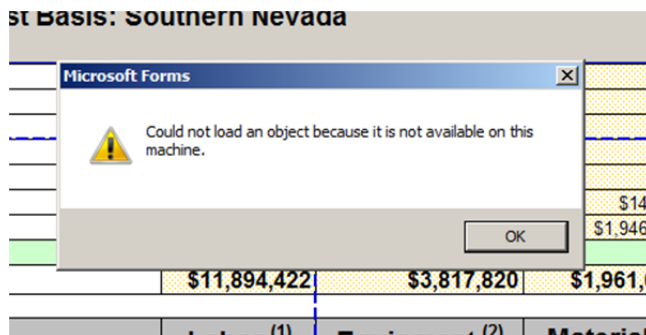
Step 1: Open the file you want to import in Excel 2010. If you see the Protected View message at the top of the screen, follow the link by clicking the left mouse button on *Click here for more details*.



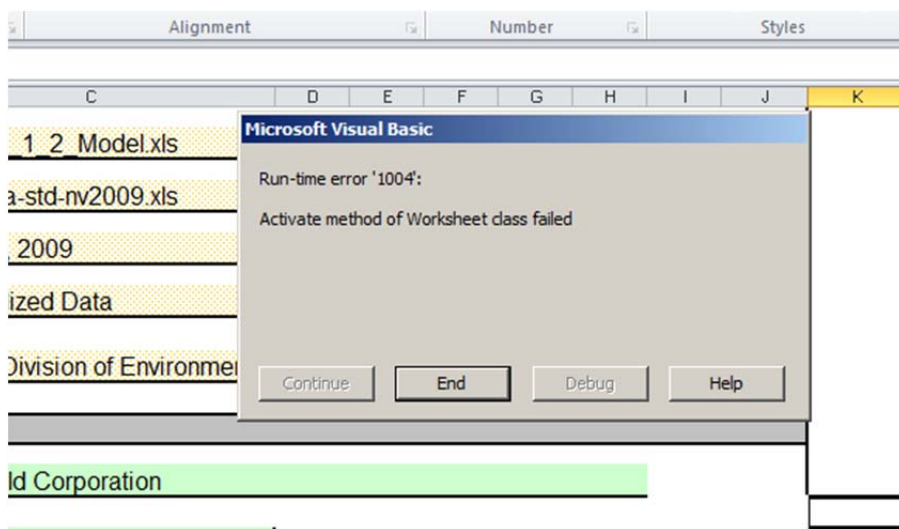
Step 2: On the File/Info screen select *Edit Anyway* in the Protected View area.



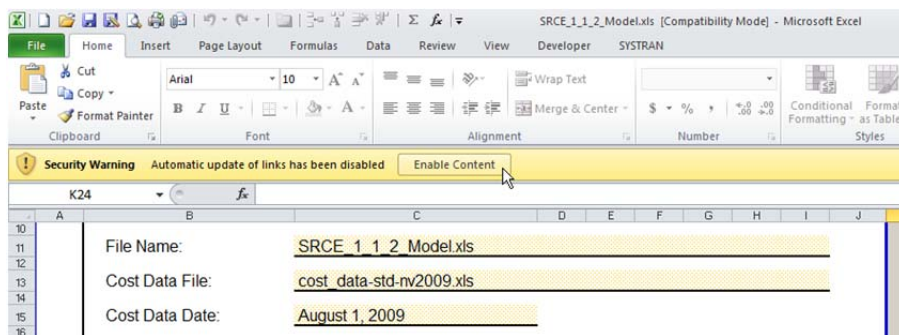
Step 3: If you do not have Office 2003 loaded on your computer the following error message box may appear because certain form handling libraries are not installed on your computer. Ignore this error and select the *OK* button.



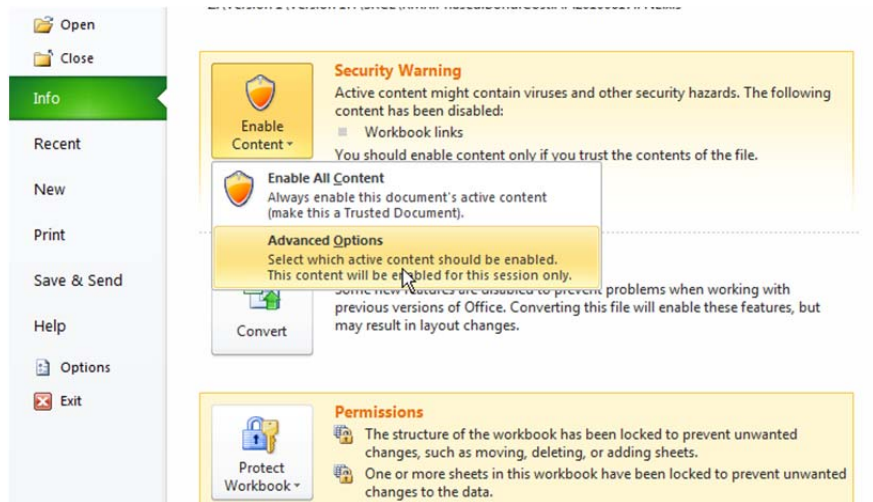
Step 4: You will probably see the following error message box. This is because the macros are not yet enabled. This doesn't matter at the moment so just select the *End* button.



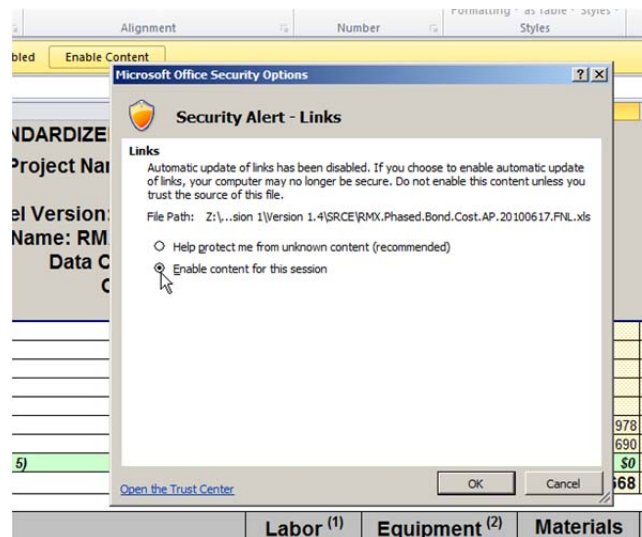
Step 5: Enable the macros by selecting the *Enable Content* button in the yellow bar at the top of the screen.



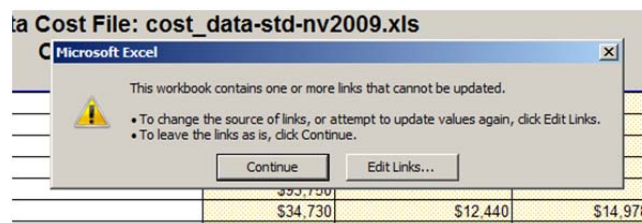
Step 6: If there are linked files (e.g. references to other files in the User Sheets), you may be taken to the File/Info tab. If so, select *Advanced Options* from the *Enable Content* button in Security Warning area



Step 7: Select *Enable content for this session* in the Security Alert – Links dialog box and press *OK*.

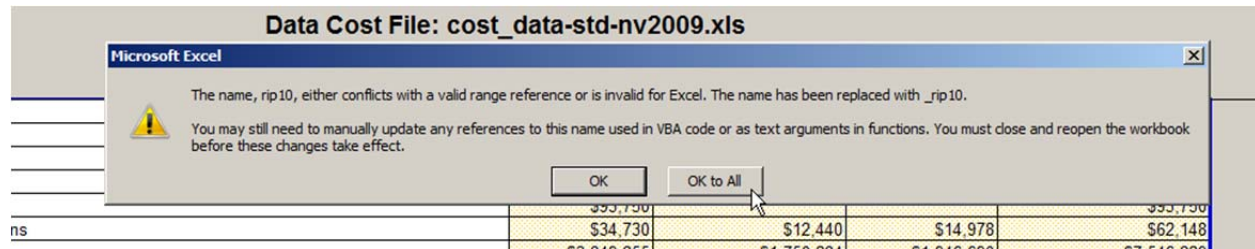


Step 8: Select *Continue* in the Links message box.



Step 9: The splash screen should now appear. Select Begin.

Step 10: Now save the model. It does not matter if you save it as an Excel 97-2003 workbook (.xls) or an Excel Macro-Enabled Workbook 2007/Excel 2010 workbook (.xlsm). Either will work. However, the file you are saving is a SRCE Version 1.1.1 or 1.1.2 file and you save it as a Macro-Enabled Workbook, then will see the following message. This relates to obsolete named references in older versions of the model. Select the *OK to All* button.



Step 11: Once the file is saved, it should now import properly in Excel 2010.