

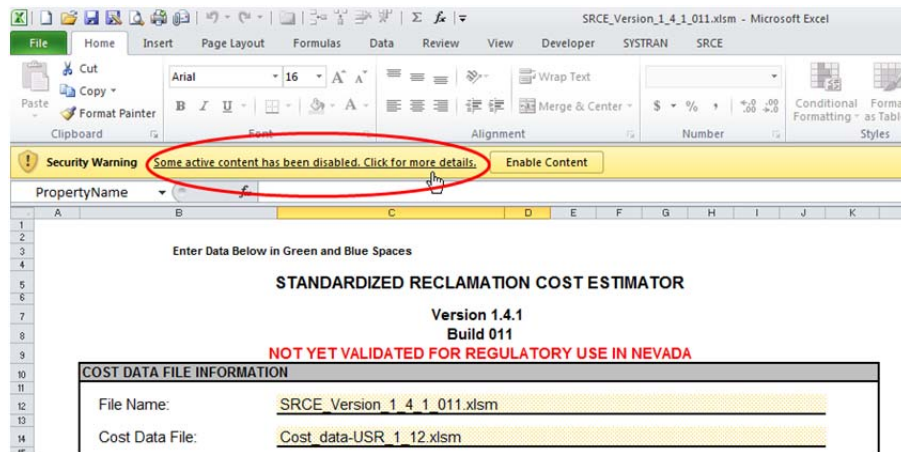
SRCE TIP: HOW TO CHECK/EDIT THE SECURITY SETTINGS IN EXCEL 2010

If you are having problems getting the macros in the SRCE to work in Excel 2010, the problem may be with the Trust Center settings on your computer. Office 2010 handles macro security differently than Excel 2003. Some of the default settings may stop the macros from working and this can be a problem. Also, if your corporate IT department has company specific default settings, these may also inhibit the SRCE macros from running.

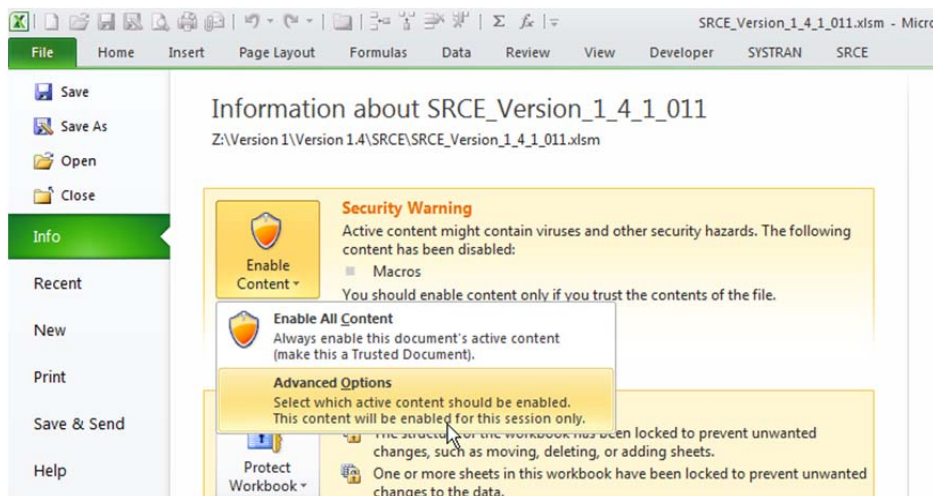
However, here are a few steps you can take to check and set your security settings to work with the SRCE in Excel 2010.

When you first load the model you may see a security warning at the top of the spreadsheet.

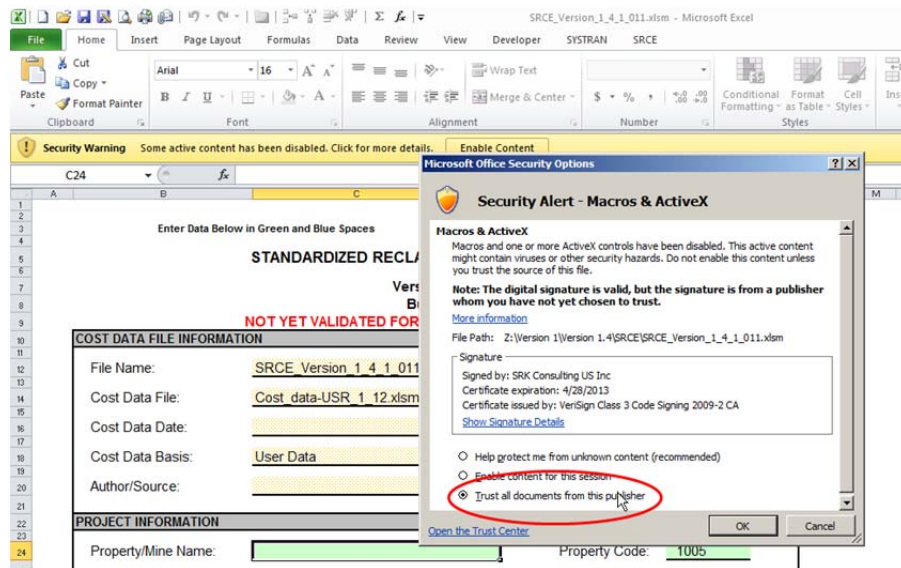
Step 1: Click the left mouse button where it says *Click for more details* button to bring up a list of Security Alerts.



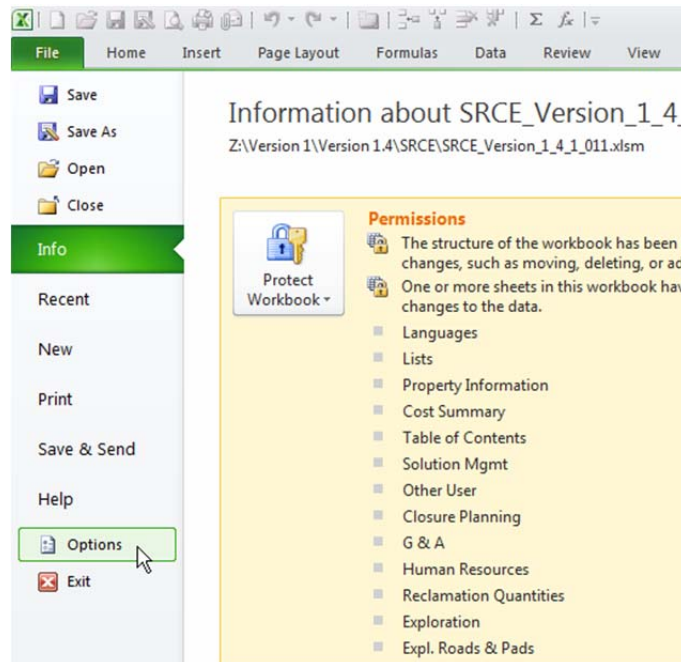
Step 2: On the File/Info screen select Advance Options on the Enable Content button



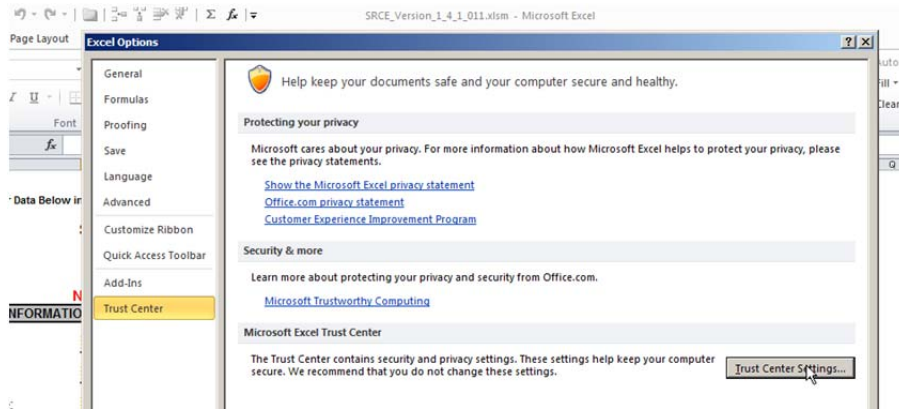
Step 3: Look through the list of security alerts that is shown and see if there is Macros & Active X alert for the SRCE. Select the option to always trust macros from this publisher. Click *OK*. Once you do this, you should not have to do this again.



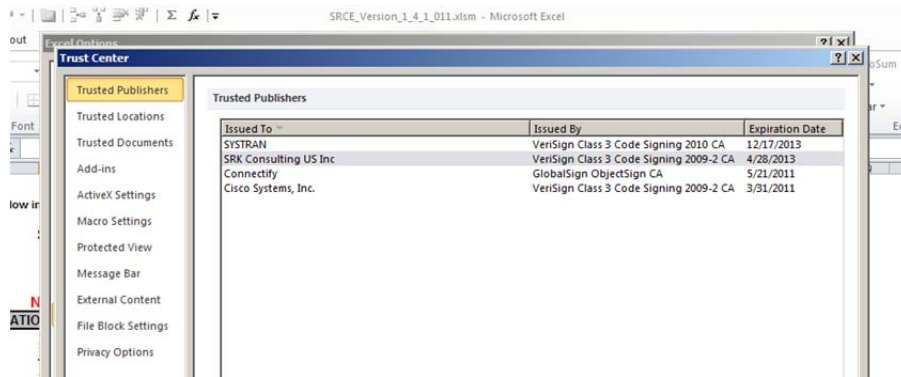
Step 4: Next, you need to check the settings in the Trust Center. To do this, go to the File tab and selection Options from the menu on the left.



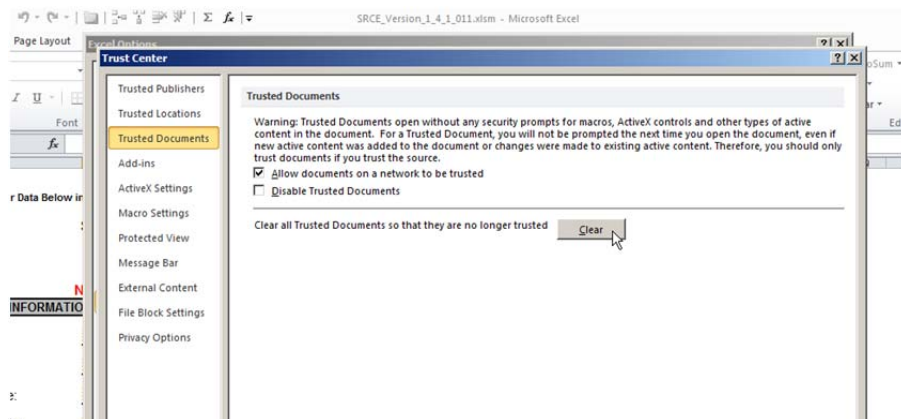
Step 5: In the Excel Options dialog box select the Trust Center tab. From this dialog box select the Trust Center Settings button.



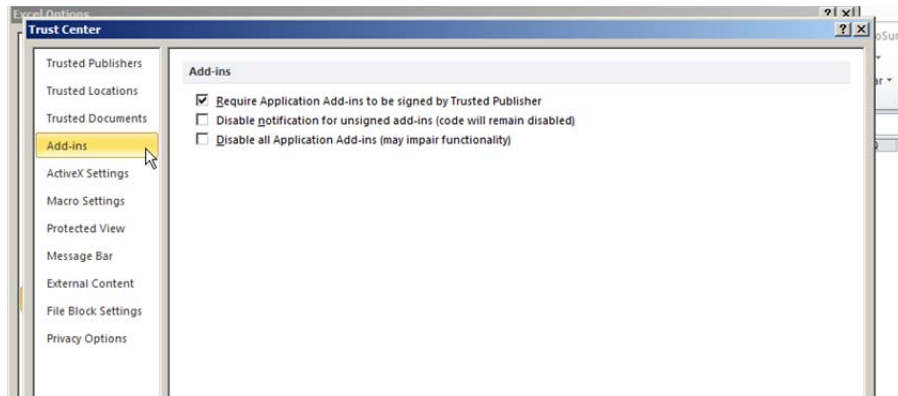
Step 6: In the Trust Center dialog button, select the Trusted Publishers tab. Look for a publisher named SRK Consulting US Inc with a certificate that expires on either April 28, 2010 or April 28, 2013 (see below). If this is not there then you need to close Excel, reopen it again and start with Step 1.



You may need to clear out all trusted documents first to gain access to the Security Alert dialog box shown in Step 3.



Step 7: Now select the Add-ins tab. Check the box next to the *Require Application Add-ins to be signed to Trusted Publisher* option.



Step 8: Macro Setting tab. Under Macro Settings, select the *Disable all macros except digitally signed macros* option. Also, check the box next to *Trust access to the VBA project object model* option. Now you should be set to let the macros run.

