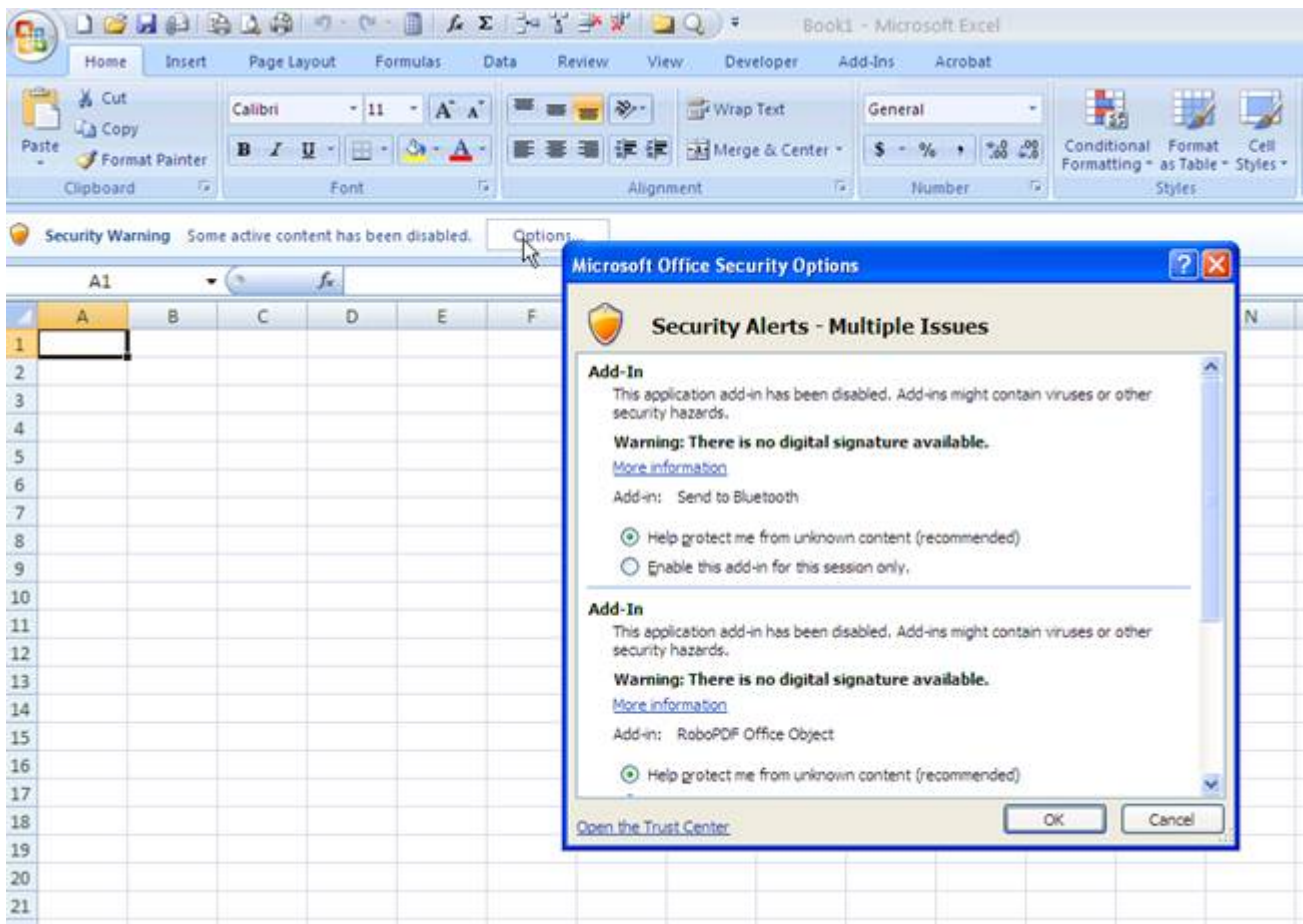


## SRCE TIP: HOW TO CHECK/EDIT THE SECURITY SETTINGS IN EXCEL 2007

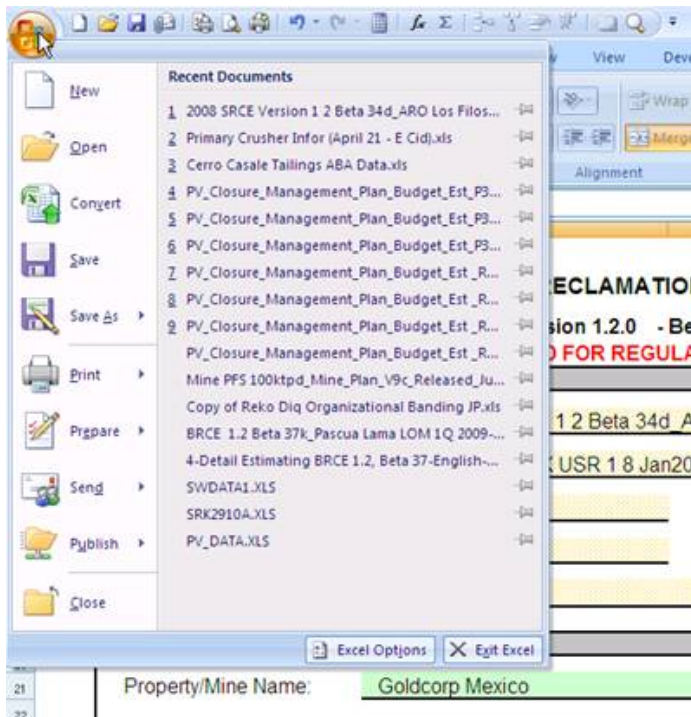
If you are having problems getting the macros in the SRCE to work in Excel 2007, the problem may be with the Trust Center settings on your computer. Office 2007 handles macro security differently than Excel 2003. Some of the default settings may stop the macros from working and this can be a problem. Also, if your corporate IT department has company specific default settings, these may also inhibit the SRCE macros from running.

However, here are a few steps you can take to check and set your security settings to work with the SRCE in Excel 2007.

When you first load the model you may see a security warning at the top of the spreadsheet. Select the Options **Step 1:** button to bring up a list of Security Alerts. Look through the list and see if there is an add-in for the SRCE that has been disabled. If so, there should be an option to always trust macros from this publisher. Select that. Once you do this, you should not have to do this again.

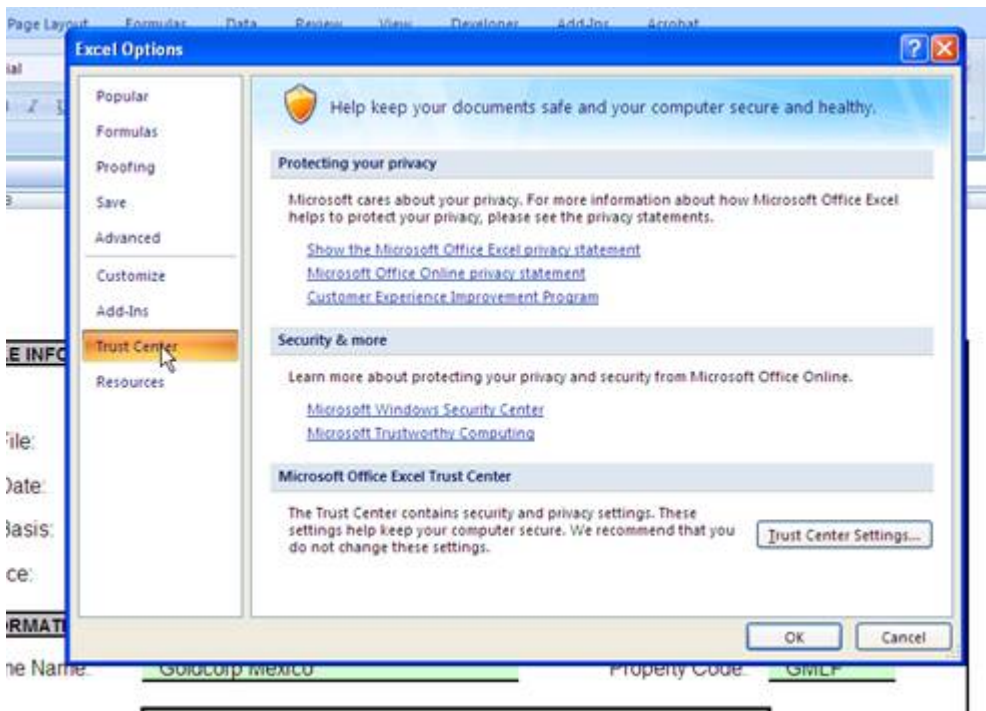


**Step 2:** Next, you need to check the settings in the Trust Center. To do this go to the Office Button in the upper left corner of the window:

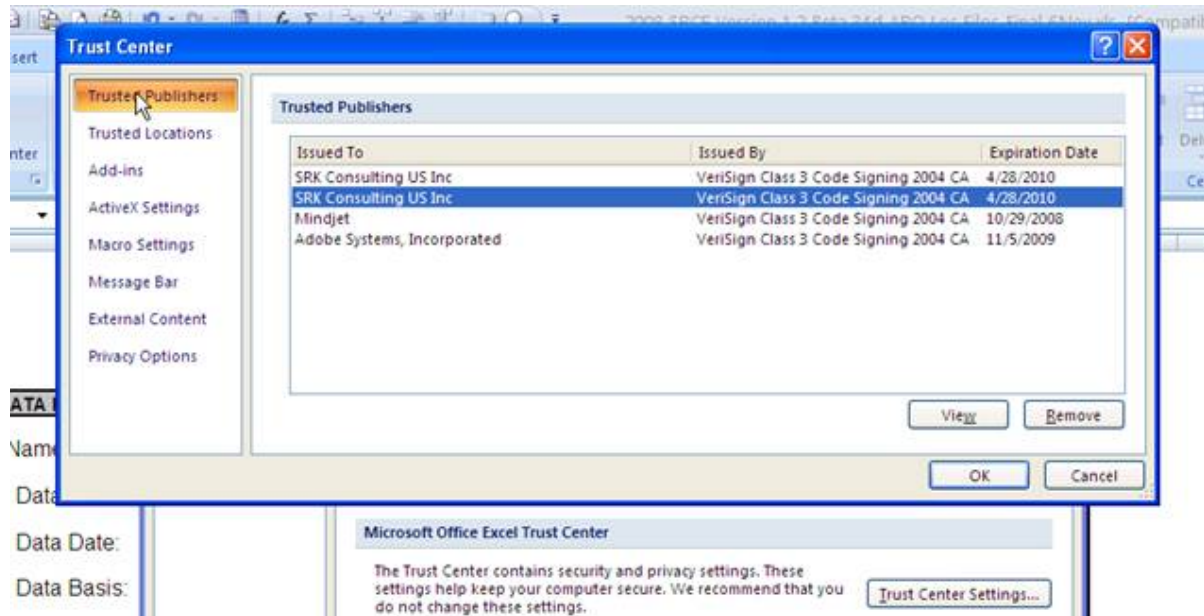


**Step 3:** Select the Excel Options at the bottom of this window.

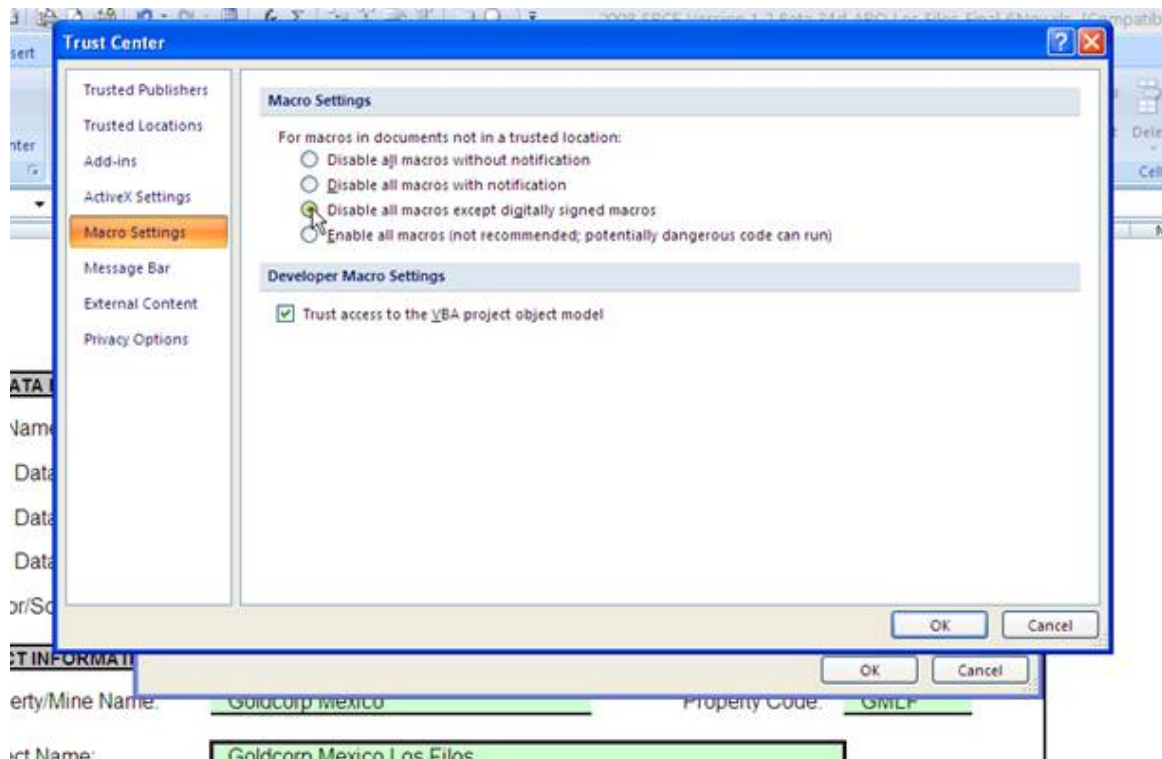
**Step 4:** In the Excel Options dialog box select the Trust Center tab. From this dialog box select the Trust Center Settings button:



In the Trust Center dialog button, select the Trusted Publishers tab. Look for a publisher named SRK Consulting US Inc with a certificate that expires on April 28, 2010 (see below). If this is not there then you need to close Excel, reopen it again and start with Step 1.



**Step 5:** Now select the Macro Setting tab. Under Macro Settings, select the *Disable all macros except digitally signed macros* option. Also, check the box next to *Trust access to the VBA project object model* option. Now you should be set to let the macros run. You may need to restart Excel at this time, but I don't think so.



If you still have problems, it may be a windows problem that is discussed on the FAQ page of the NVBond.org web site: <http://www.nvbond.org/faq.htm#Excel2007>. On that page there is a link to a program that will override some of the macro security in Office 2007. This may be against your corporate IT policies, so be careful. Service Pack 2 supposedly also fixed this problem.